



alignrt® *InBore*™

SGRT FOR HALCYON® AND ETHOS™ LINEAR ACCELERATORS



**SET UP OUTSIDE.
TRACK INSIDE.**

+140 SYSTEMS IN ROUTINE CLINICAL USE

for DIBH, free breath breast, pelvis, abdomen, thorax / lung

ESTRO-ACROP / AAPM TG302 COMPLIANT

with $\leq 0.5\text{mm}$ / $\leq 0.2^\circ$ accuracy at all couch angles and skin tones

FAST AND EFFICIENT WORKFLOW

Published clinical data showing faster total treatment time¹, accurate and reproducible DIBH², high detection accuracy for setup and monitoring.³

"AlignRT InBore allows us to combine the benefits of fast CBCT, high dose rate and continuous monitoring of patient motion to perform safe DIBH treatments"

Daniel Nguyen, Medical Physicist, Orlam Group

alignrt® InBore™

SGRT WITHOUT COMPROMISE

Enables 6DoF intrafraction motion monitoring with no shadowing

Projection system invisible to patients

Single cable connection independent of linac

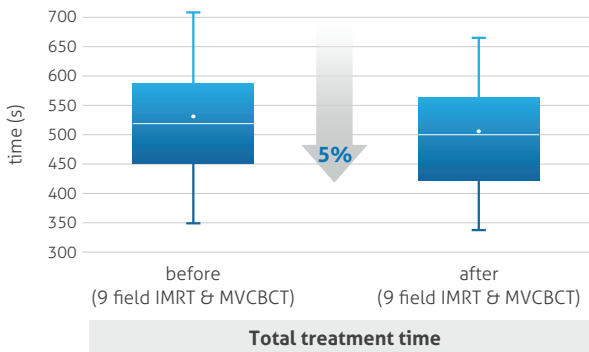


No impact on the linac workflow or serviceability⁴

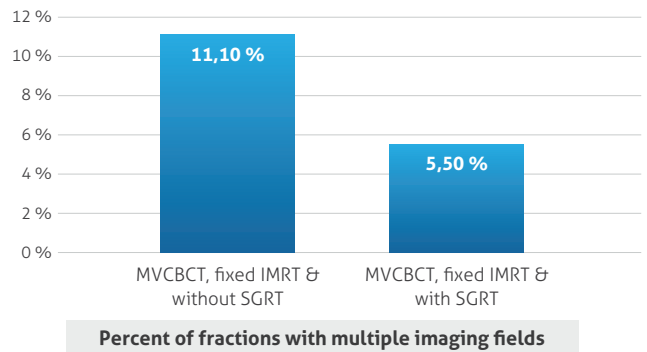
Low 12mm profile

PUBLISHED EVIDENCE SHOWING FASTER SETUP AND REDUCED REPEAT IMAGING¹

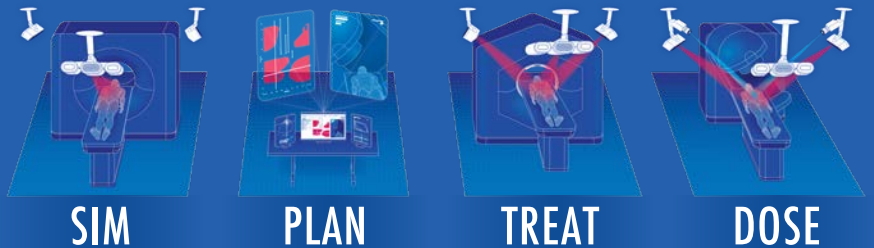
Mean total treatment **time reduced by 5%** after AlignRT implementation¹



Up to **50% reduction** in the number of fractions requiring setup correction and additional imaging fields¹



Guidance for **EVERY** step



Discover more at www.visionrt.com

visionrt | Guiding Radiation Therapy™

Halcyon® and Ethos™ are registered trademarks of Varian Medical Systems. The use of Halcyon® and Ethos™ herein is for identification purposes only. Use of these marks does not indicate sponsorship, affiliation, endorsement, or approval by Varian.

Please find references at VisionRT.com/References.
©2024 Vision RT Ltd, All rights reserved.
1016-0468 Issue 3.0