

# SGRT FOR DOSE VISUALIZATION

## Visualize Dose Distribution and Monitor Patient Positioning in Real Time

DoseRT brings together Cherenkov Imaging with AlignRT and Horizon cameras, to monitor both beam and patient position in real time.

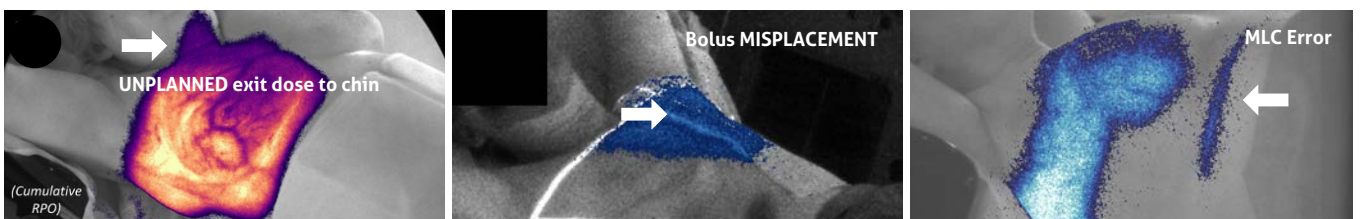


### What is Cherenkov Imaging?

During radiation therapy, Cherenkov light is emitted from the patient's skin where the radiation beam enters or exits the body. Cherenkov Imaging uses highly sensitive cameras, synchronized with both the linac and SGRT, to visualize this light from the patient's skin.



Published data suggests approximately **10%** of patients received sub-optimal treatment that can be detected by Cherenkov imaging.<sup>1</sup>



Guidance for **EVERY** step



*DoseRT is available for sale in the US and pending CE Mark. SimRT, MapRT, AlignRT and DoseRT are Trademarks of Vision RT. BeamSite is a trademark of DoseOptics LLC.*

<sup>1</sup> Jarvis LA et al. Initial Clinical Experience of Cherenkov Imaging in External Beam Radiation Therapy Identifies Opportunities to Improve Treatment Delivery. *Int J Radiat Oncol Biol Phys.* 2021 Apr 1;109(5):1627-1637.